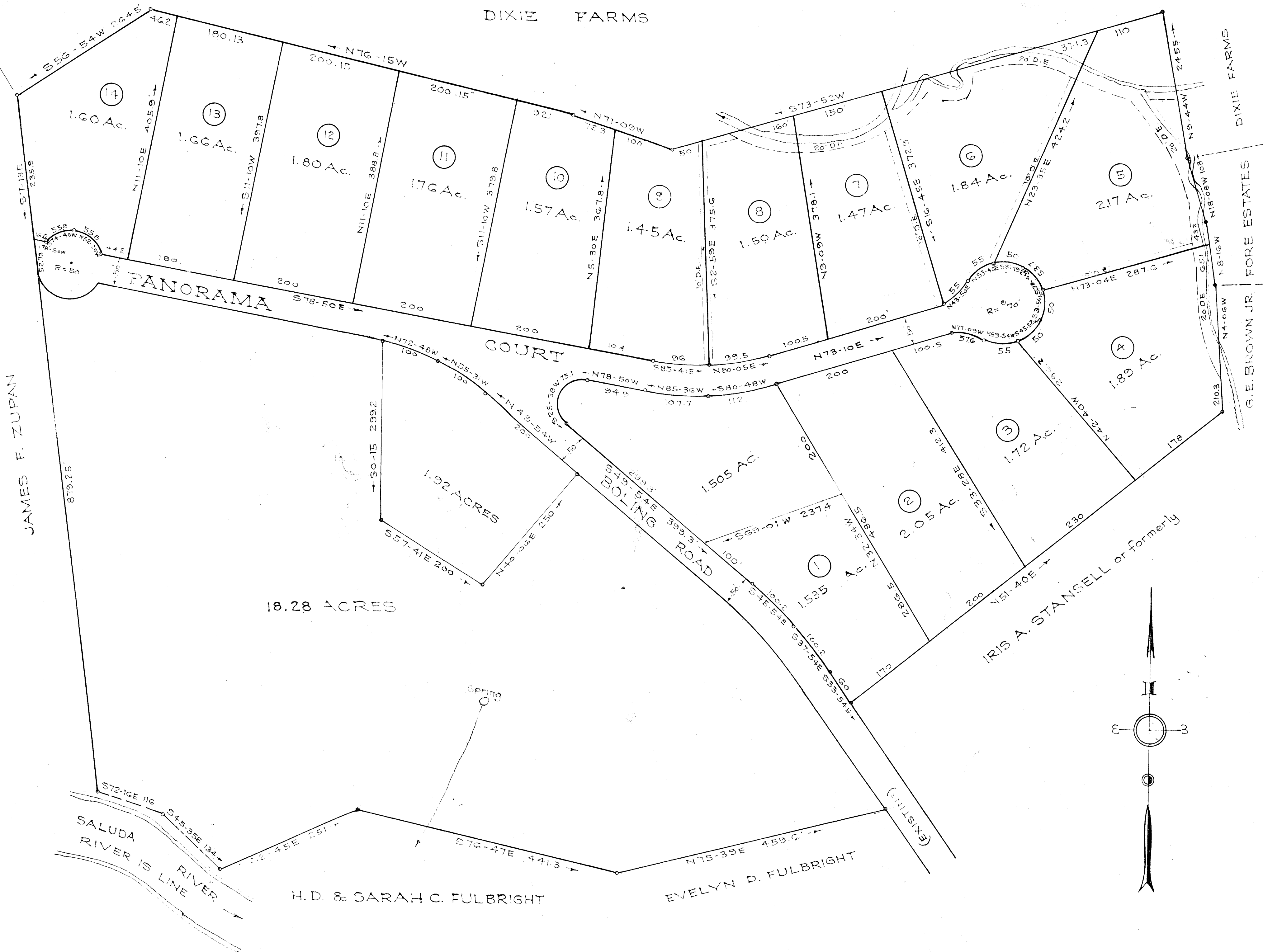


DIXIE FARMS



PLANTATION ESTATES  
 PROPERTY OF  
 DEMPSEY CONSTRUCTION CO., INC.  
 GREENVILLE CO. S. C.  
 Scale 1"=100' December 1965

*July 18, 1967  
 10:15 a.m.  
 R.M.C.*

PPP-127

Plat Revised May, 1966  
 Iron Pins at all Corners

DALTON & NEVES, ENGINEERS  
 GREENVILLE, S. C.

250

2163 F.B. 370-372

#2163 Filed This 18<sup>th</sup> day of July 1967  
 And Recorded in Vol. PPP Page 127 at 10:15 A.M.  
*W.S. Starnes*  
 Register Mesne Conveyance Greenville County, S. C.